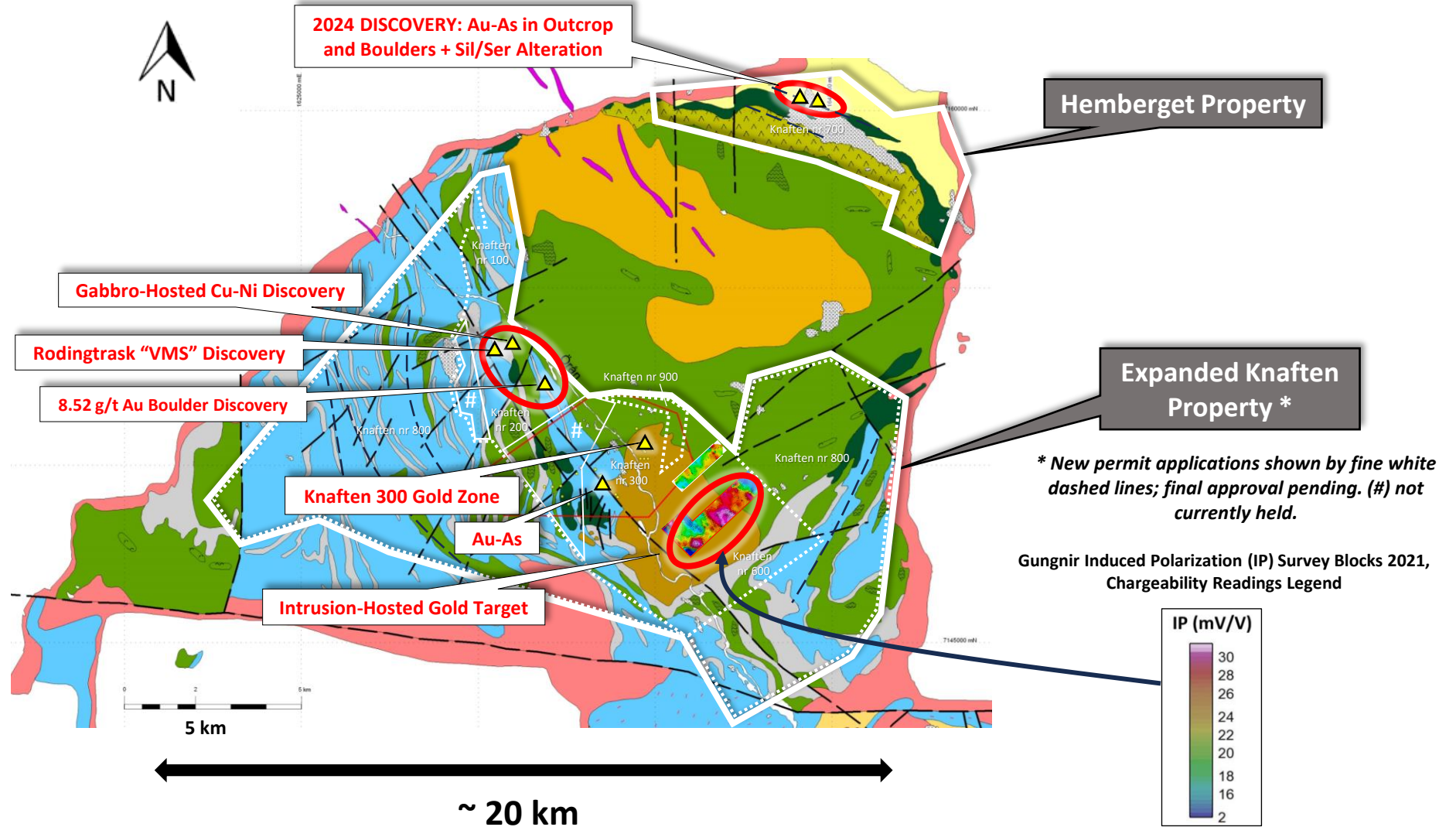


# Knaften-Hemberget Gold Project (> 15,000 Ha)



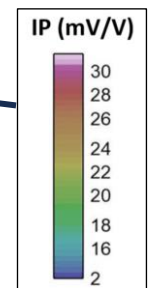
Geology Map Source: Lapland Goldminers, previous operator (main work area/expired claim block in red); based largely on SGU publication in 2005.

Sil = Silica; Ser = Sericite; Au = Gold; As = Arsenic; Cu = Copper; Ni = Nickel; VMS = volcanogenic massive sulphide-related mineralization

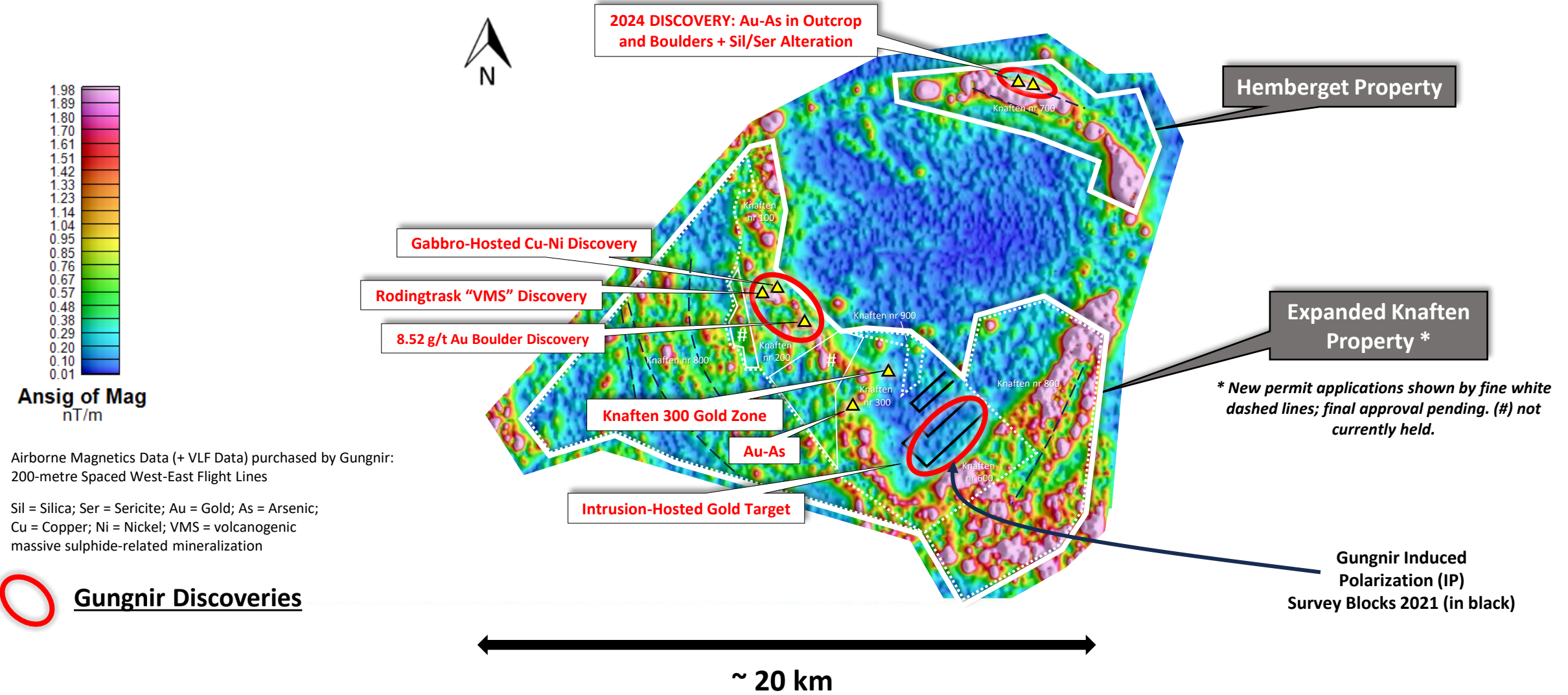


 **Gungnir Discoveries**

Gungnir Induced Polarization (IP) Survey Blocks 2021, Chargeability Readings Legend



# Airborne Magnetics: Knaften-Hemberget Gold Project



Airborne Magnetics Data (+ VLF Data) purchased by Gungnir: 200-metre Spaced West-East Flight Lines

Sil = Silica; Ser = Sericite; Au = Gold; As = Arsenic; Cu = Copper; Ni = Nickel; VMS = volcanogenic massive sulphide-related mineralization

\* New permit applications shown by fine white dashed lines; final approval pending. (#) not currently held.

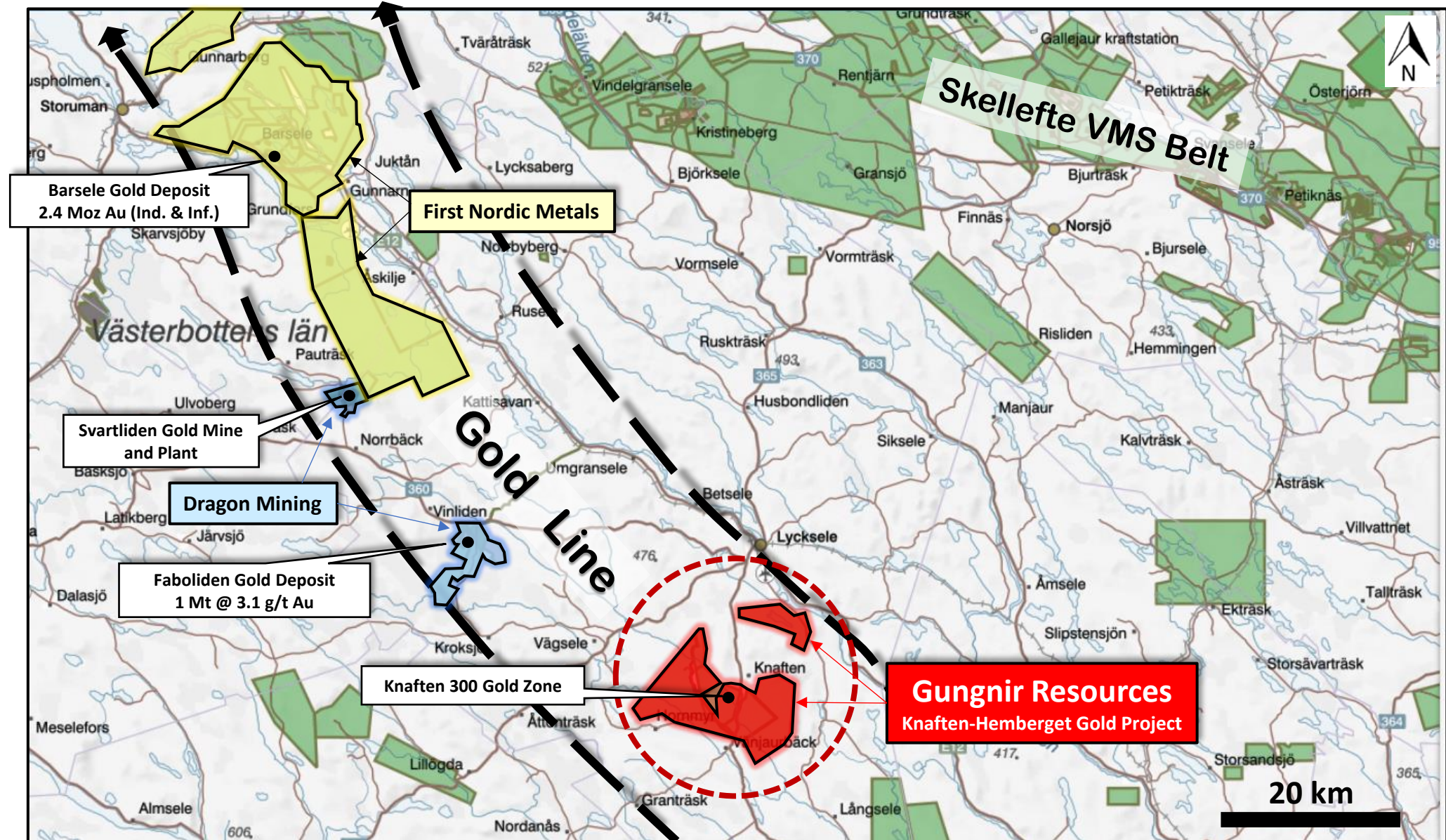
Gungnir Induced Polarization (IP) Survey Blocks 2021 (in black)

**Gungnir Discoveries**

~ 20 km

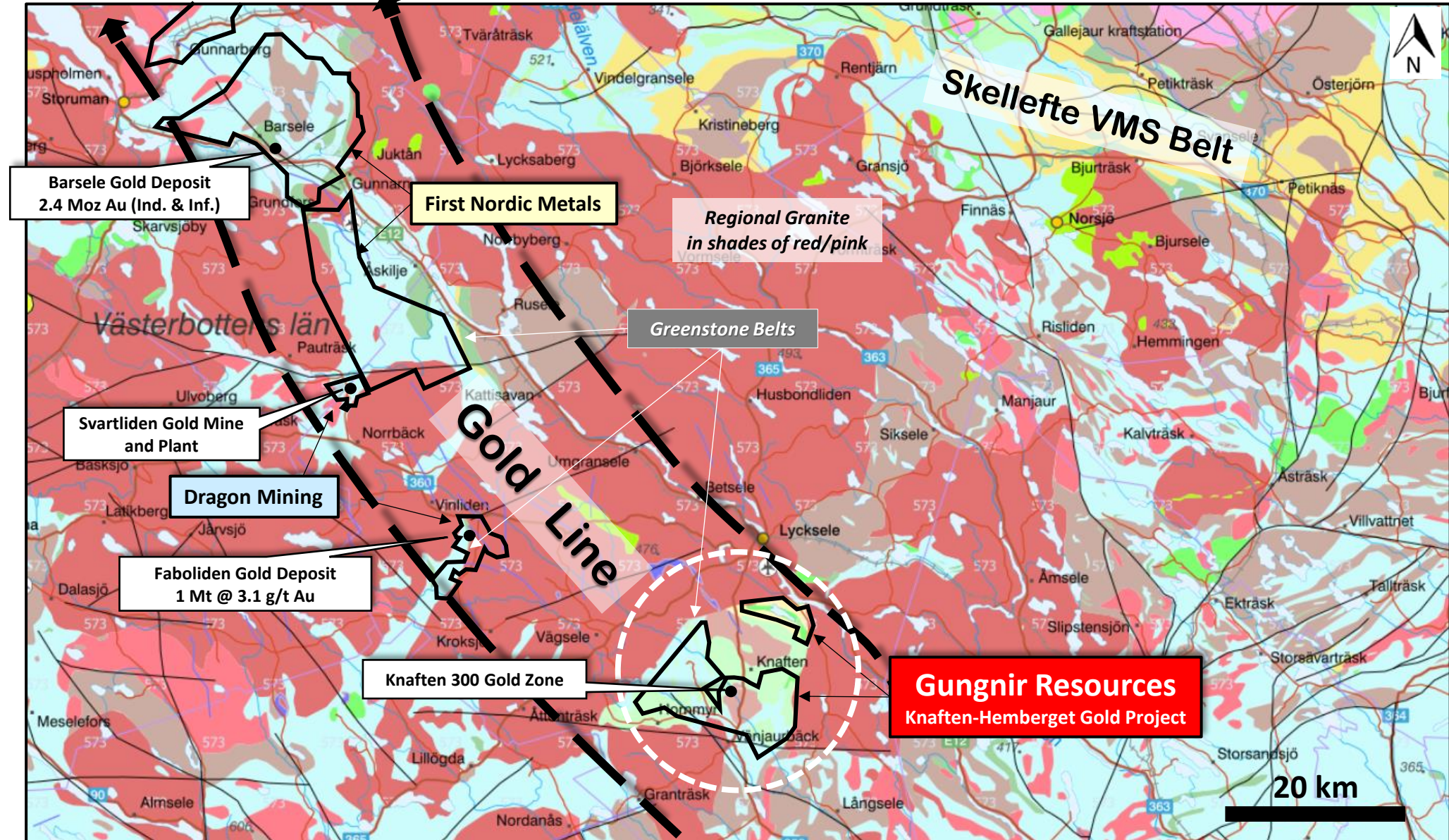


# Key Permit Holders and Gold Deposits along Main Part of the Gold Line



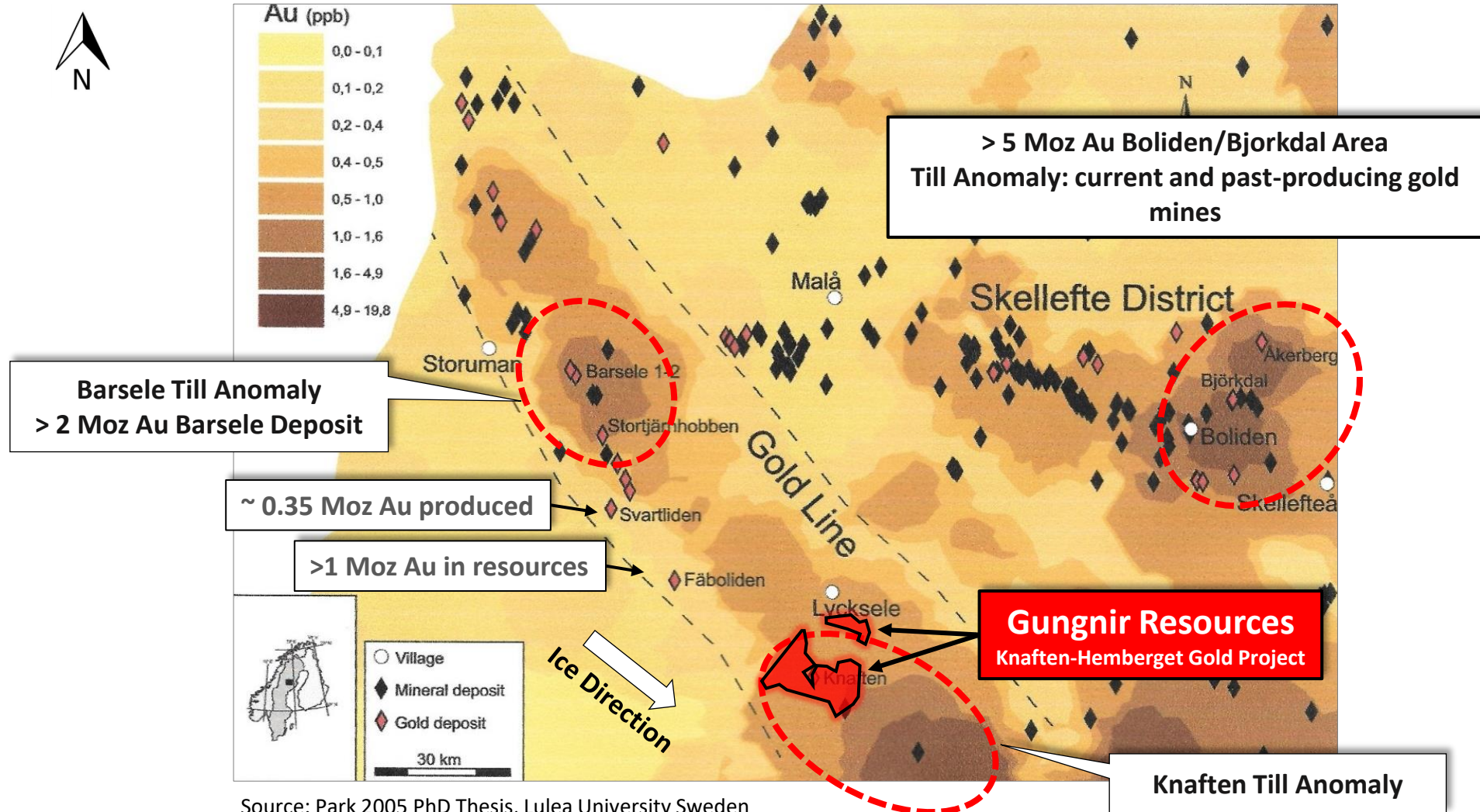


# Favourable Greenstone Belts and Permits along Main Part of the Gold Line





# Regional Gold-in-Till Map, Gold Line and Gungnir's Gold Project Vasterbotten District, Sweden



Source: Park 2005 PhD Thesis, Lulea University Sweden  
Original Data from SGU (Swedish Geological Survey)