

Knaften-Hemberget Greenstone Belt, Mineral Occurrences and Targets

Gungnir's Knaften and Hemberget properties

Legend

Postkinematic intrusions

- Dolerite
- Coarse grained porphyritic granite

Pre- to synkinematic intrusions

- 1** Medium to coarse grained quartz diorite
- Medium to coarse grained granite - granodiorite
- Fine to medium grained granite - granodiorite
- 2** Gabbro

Svecokarelian suprakrustal rocks

- 3 & 4** Dacite - rhyolite
- Andesite - dacite pyroclastic rock
- Basalt
- Pillow lava
- Basalt, pyroclastic rock
- Argillite - arenite
- Argillite, graphite bearing

— Fault - lineament

— Örån river

— Lake

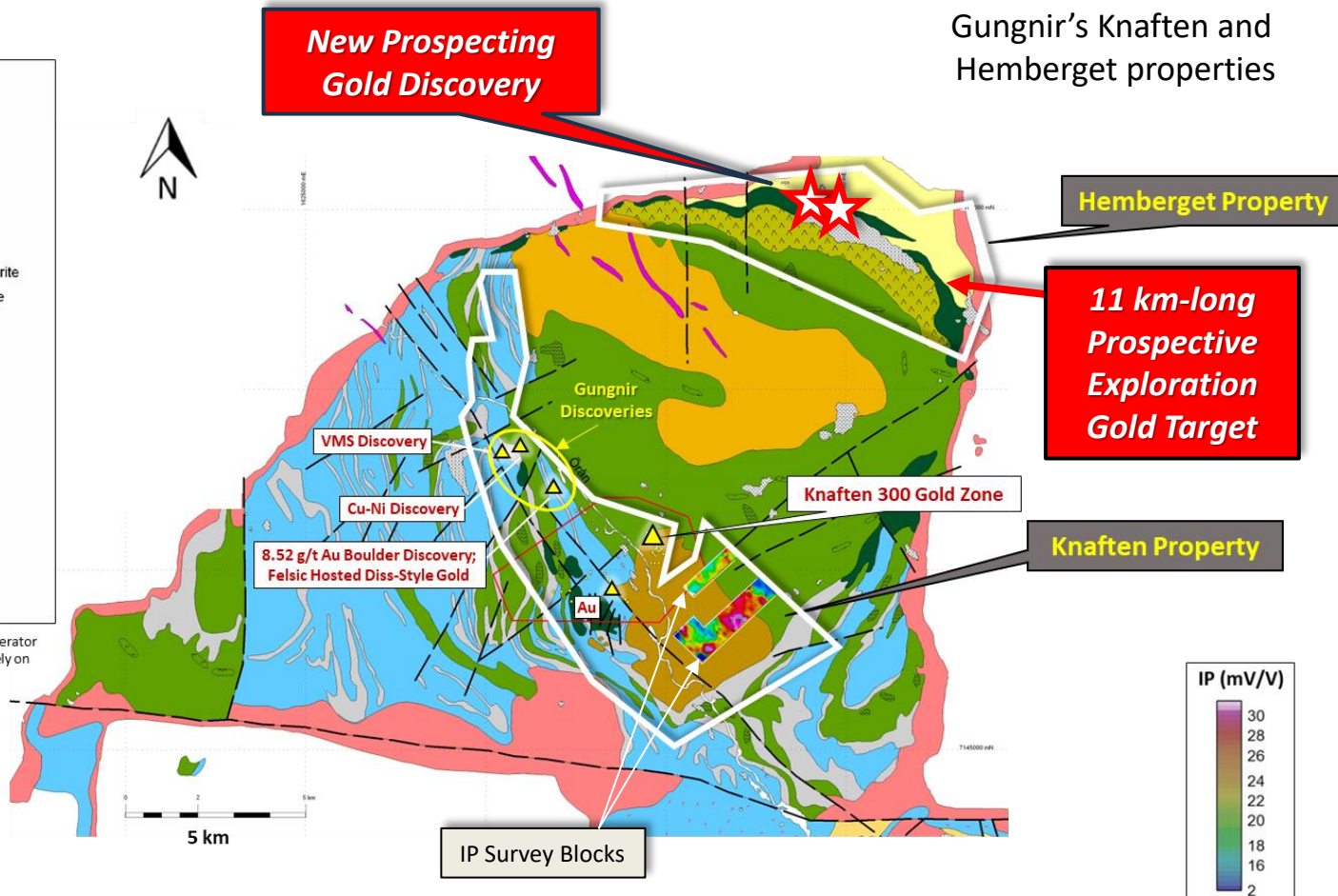
Geology Map Source: Lappland Goldminers, previous operator (main work area/expired claim block in red); based largely on SGU publication in 2005.

New Prospecting Gold Discovery

Hemberget Property

11 km-long Prospective Exploration Gold Target

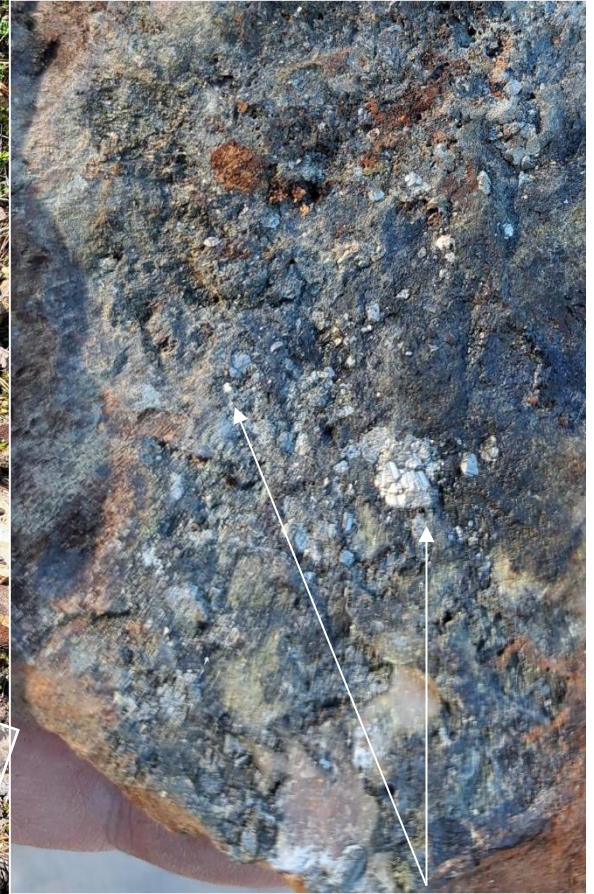
Knaften Property



Targets & Favourable Host Rock

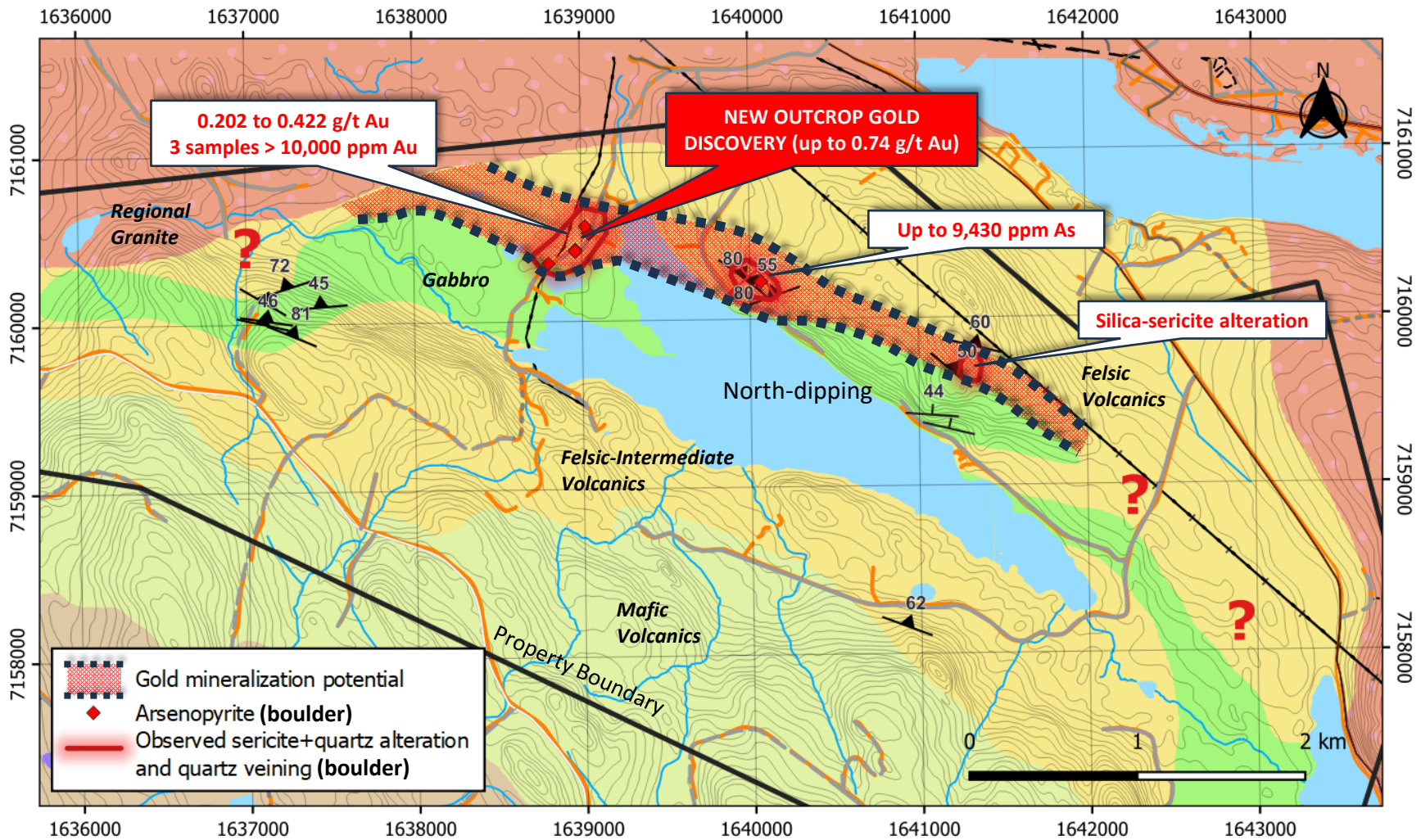
- 1.** Intrusion Hosted Au (Knaften 300) and New IP Targets to the south within the intrusion
- 2.** Cu-Ni Target Rocks (Gabbro hosted)
- 3.** Felsic Volcanic Hosted, Disseminated (Diss)-Style Au
- 4.** VMS Target Rocks

Hemberget Outcrop; Highly Anomalous Gold (0.60 & 0.74 g/t Au) with Associated Silica-Sericite Alteration + Arsenopyrite

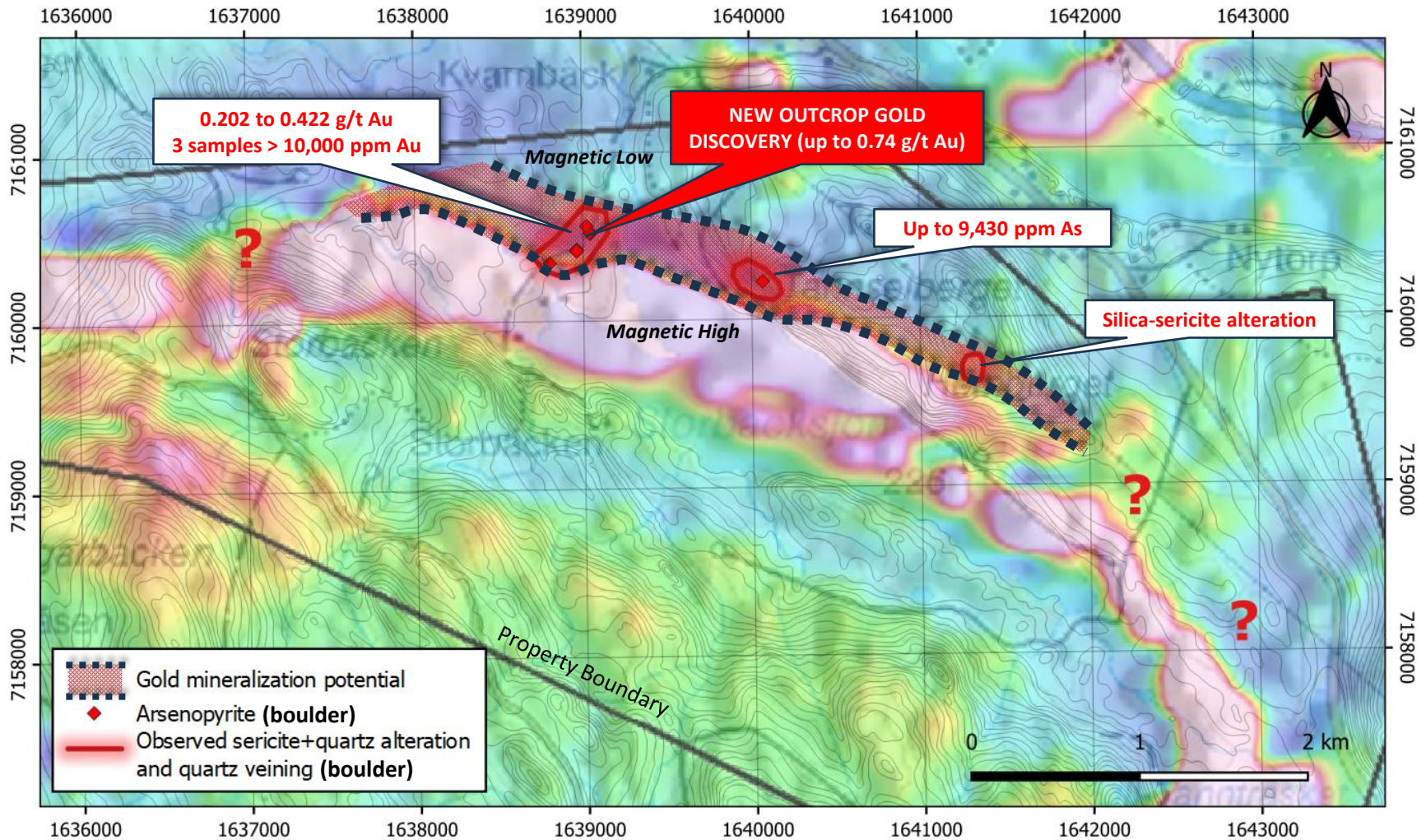


Disseminated fine and coarse-grained arsenopyrite (silver in colour); grab sample location indicated with wide arrow

Hemberget New Gold Exploration Target - Geology

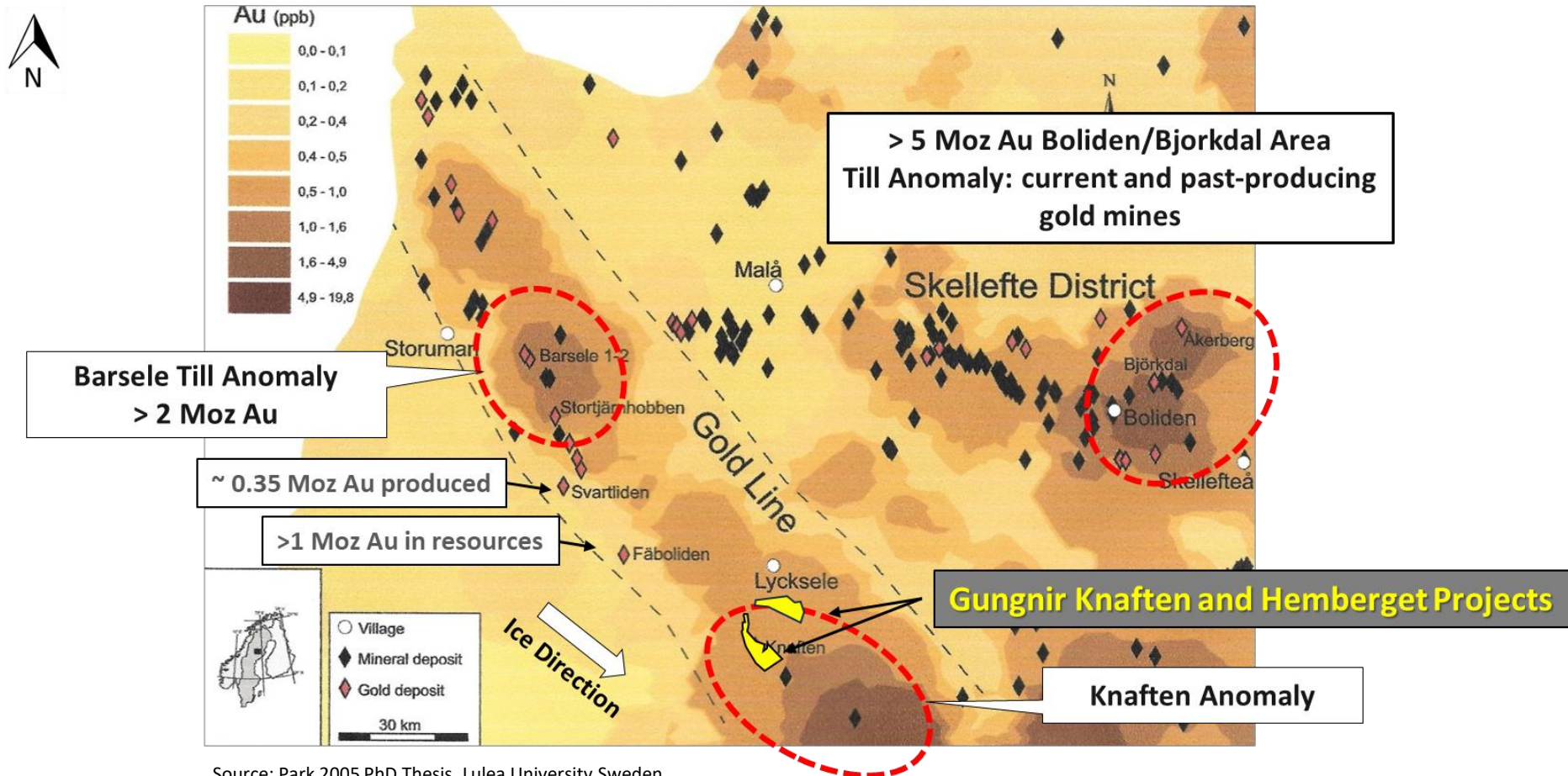


Hemberget New Gold Exploration Target - Magnetics



Regional Gold-In-Till Anomalies, Vasterbotten District Sweden

Knaften and Hemberget located up-ice of large Knaften Gold-in-Till Anomaly



Source: Park 2005 PhD Thesis, Lulea University Sweden
 Original Data from SGU (Swedish Geological Survey)