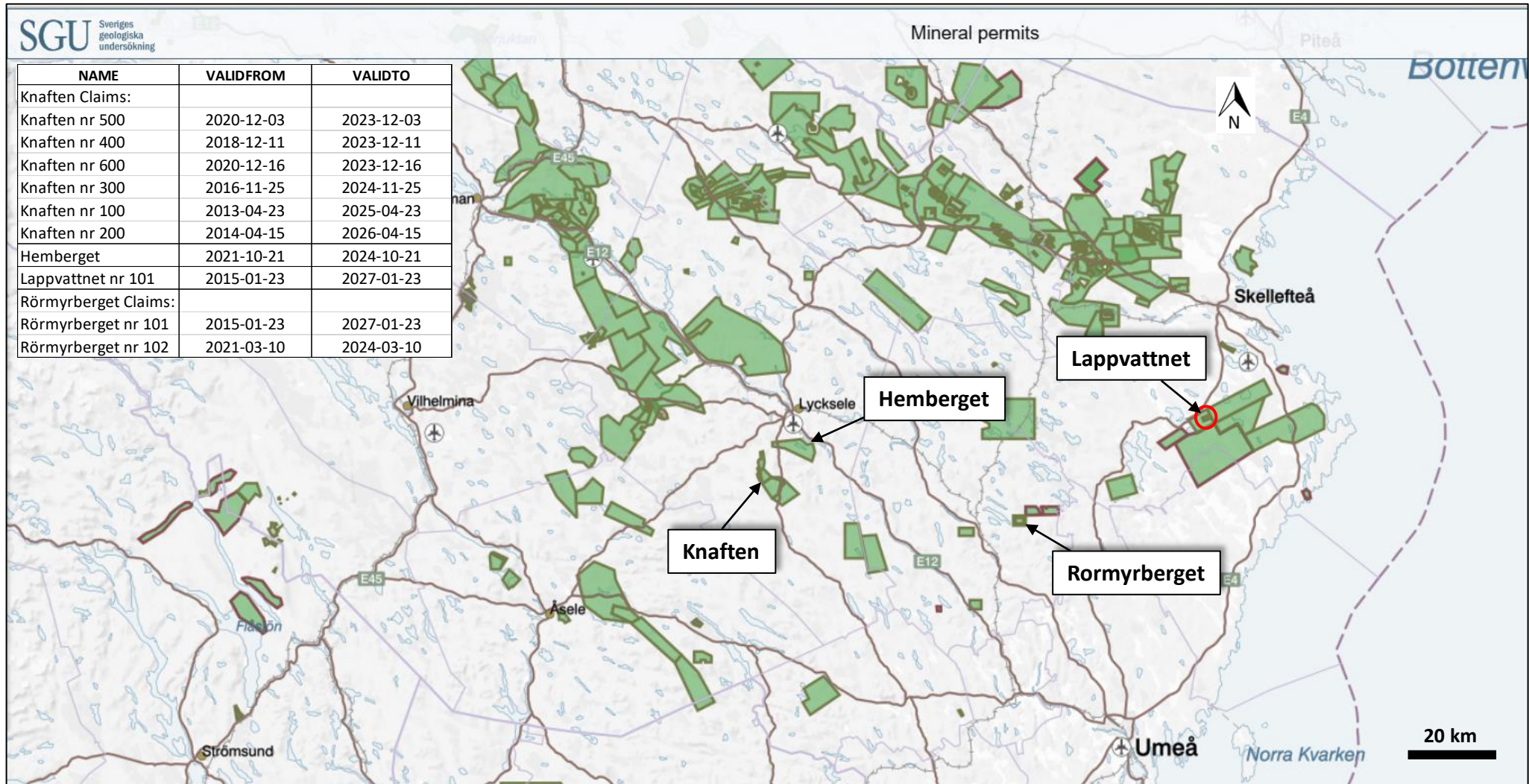
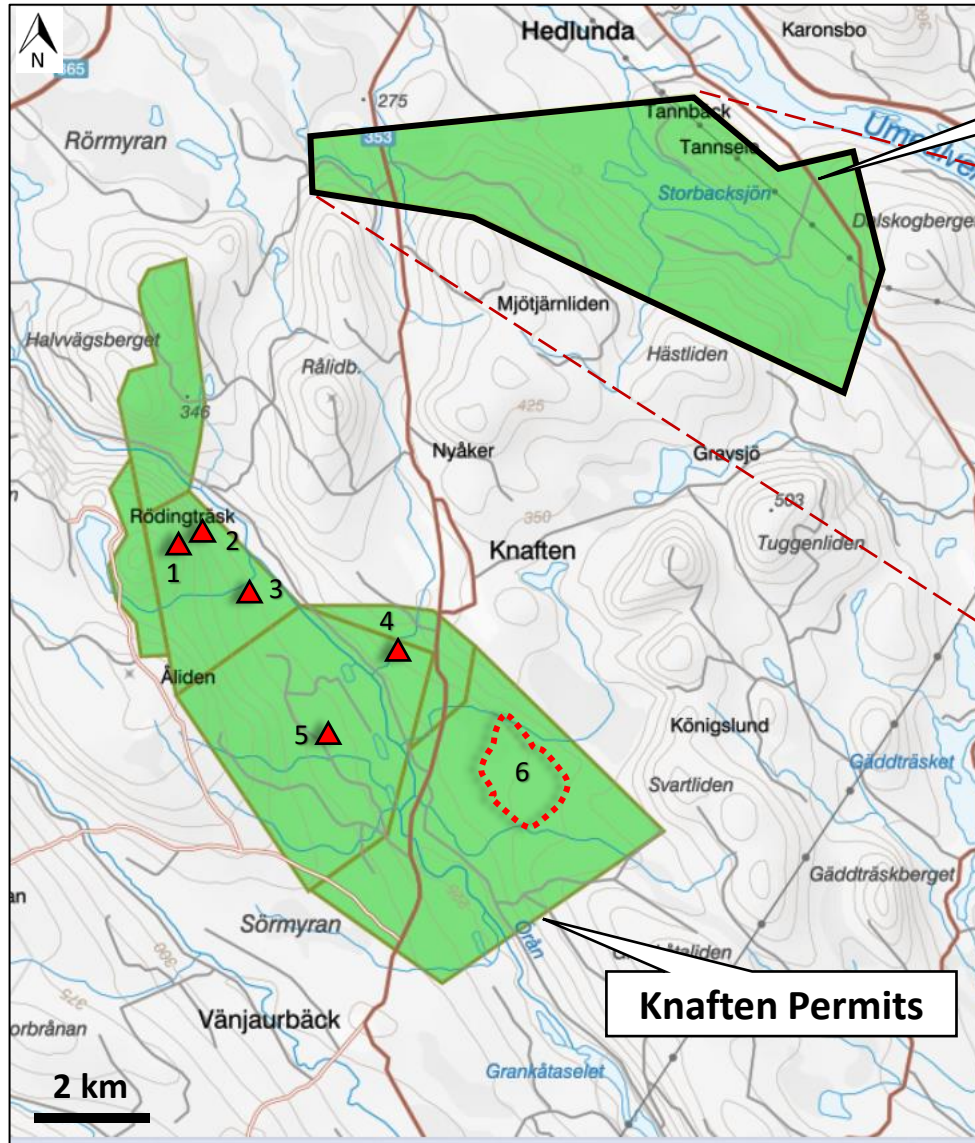


# Gungnir Sweden Mineral Permits



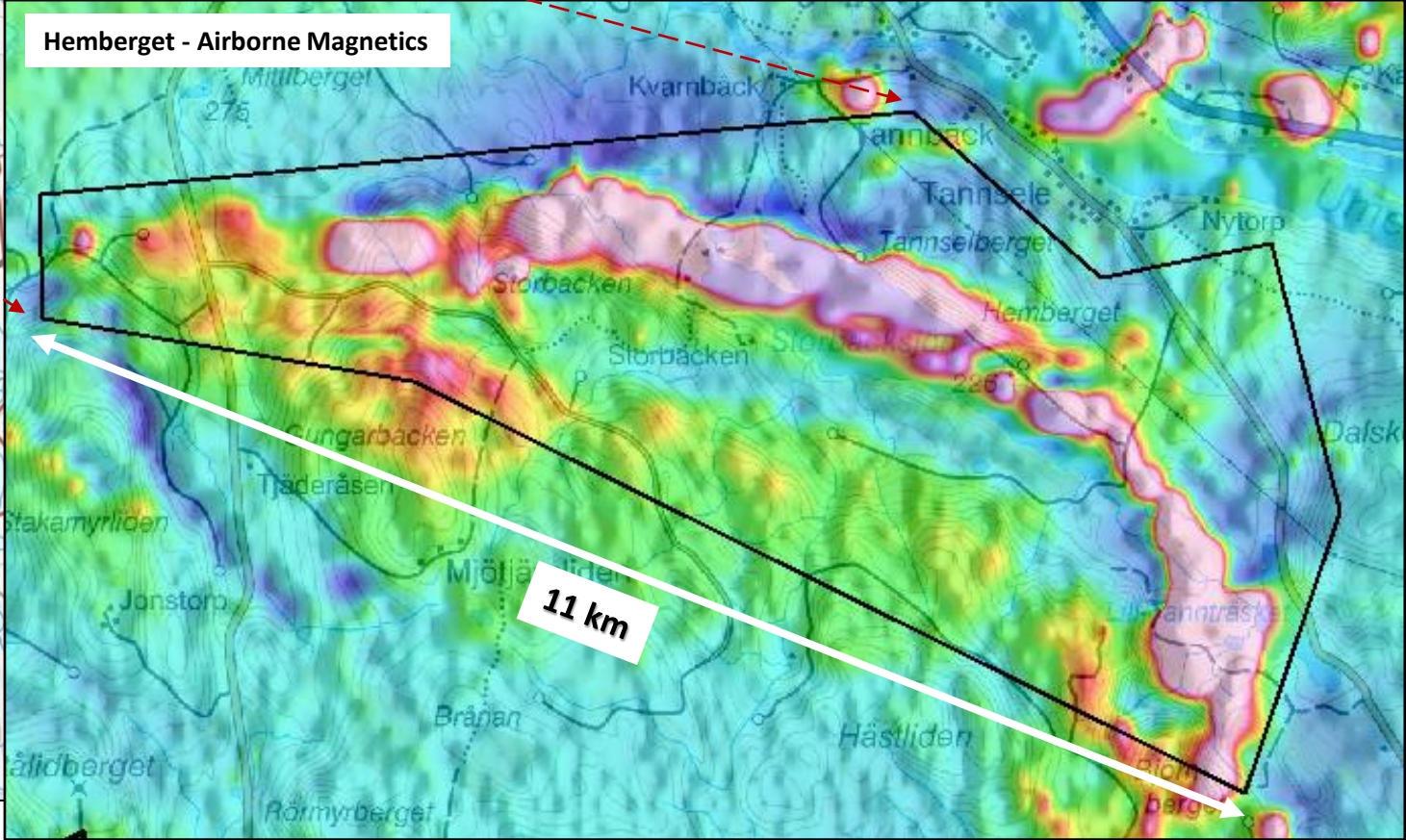
<https://apps.sgu.se/kartvisare/kartvisare-mineralrattigheter.html>

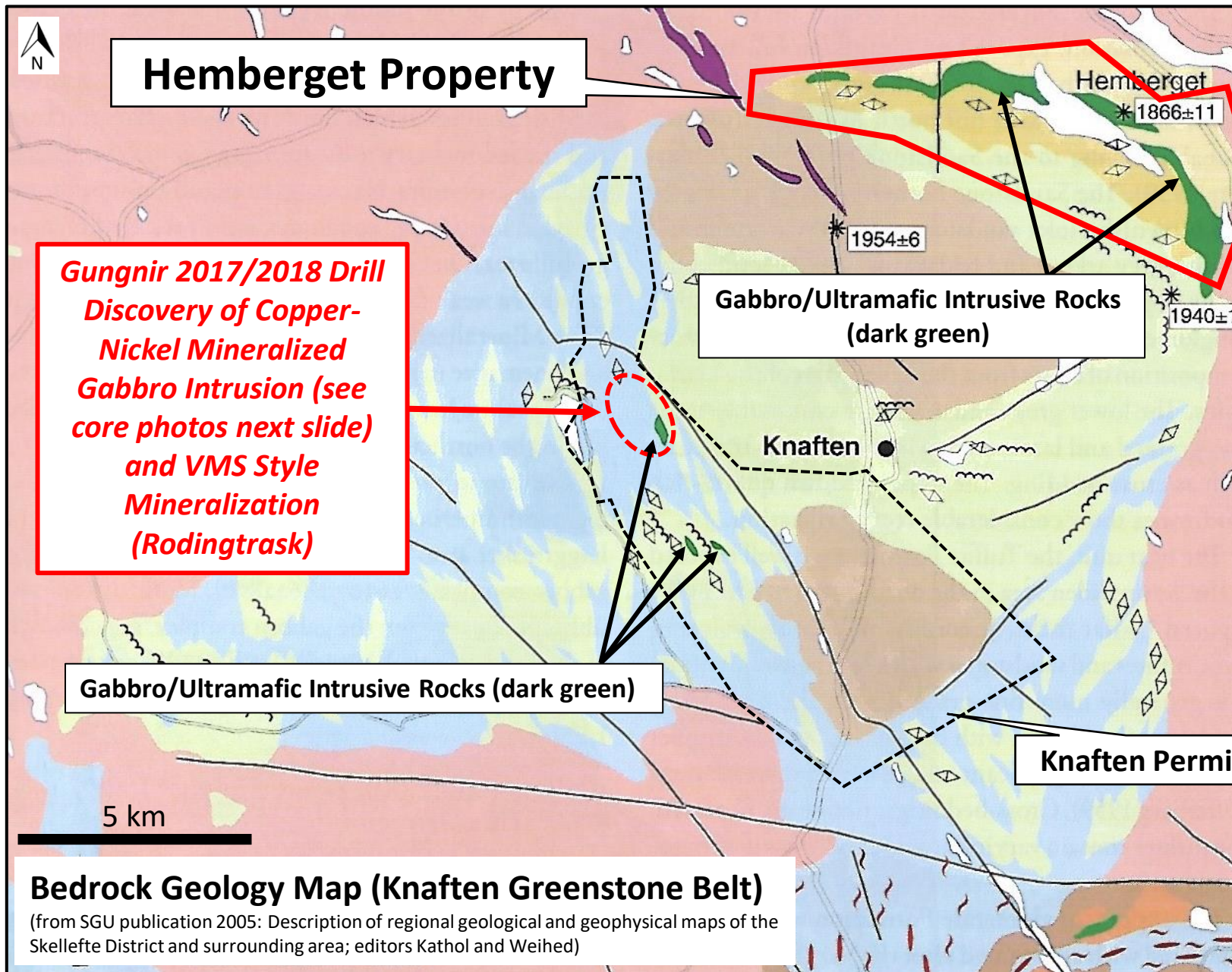
# Hemberget Property



**Hemberget**

Regional Targets / Discoveries To Date	
1	Gungnir Drill Discovery - Rodingtrask VMS system (Zn)
2	Gungnir Drill Discovery - Gabbro Hosted Cu-Ni
3	Gungnir Prospecting Discovery - Gold-Bearing Boulders up to 8.5 g/t Au (unsourced)
4	Knaften 300 Intrusion-Hosted Gold Zone
5	Gold Occurrence
6	Undrilled IP-Chareability Target defined in 2021





**Hemberget Property**

**Gungnir 2017/2018 Drill  
Discovery of Copper-  
Nickel Mineralized  
Gabbro Intrusion (see  
core photos next slide)  
and VMS Style  
Mineralization  
(Rodingtrask)**

**Gabbro/Ultramafic Intrusive Rocks  
(dark green)**

**Gabbro/Ultramafic Intrusive Rocks (dark green)**

**Knaften Permits**

**Bedrock Geology Map (Knaften Greenstone Belt)**  
(from SGU publication 2005: Description of regional geological and geophysical maps of the Skellefte District and surrounding area; editors Kathol and Weihed)

- Dolerite, Mesoproterozoic  
*Diabas, mesoproterozoisk*
- Late to post Svecokarelian intrusive rocks, c. 1.82–1.76 Ga**  
*Sen- till postsvekokarelska intrusivbergarter, ca 1,82–1,76 Ga*
- Granite, Revsund suite, TIB  
*Granit, Revsundssviten, TMB*
- Granite, Skellefte-Härnös suite  
*Granit, Skellefte-Härnösviden*
- Early Svecokarelian calc-alkaline intrusive rocks, c. 1.96–1.86 Ga**  
*Tidigsvekokarelska kalk-alkalina intrusivbergarter, ca 1,96–1,86 Ga*
- Metagranitoid, Jörn G1 suite  
*Metagranitoid, Jörn G1-sviten*
- Mafic or ultramafic rock, Jörn G1 suite  
*Mafit eller ultramafit, Jörn G1-sviten*
- Metagranitoid, calc-alkaline, c. 1950 Ma  
*Metagranitoid, kalkalkalin, ca 1950 Ma*
- Bothnian Supergroup, c. 1.96–1.86 Ga**  
*Bottniska supergruppen, ca 1,96–1,86 Ga*
- Metadacite to metarhyolite  
*Metadacit till metaryolit*
- Metadacite  
*Metadacit*
- Mafic metavolcanic rock  
*Mafisk metavulkanit*
- Metagreywacke, meta-argillite  
*Metagråvacka, metaargillit*
- Deformation zone, unspecified  
*Deformationszon, ospecificerad*
- Sample site for radiometric dating, age in million years  
*Provpunkt för radiometrisk datering, ålder i miljoner år*
- Altered to veined gneiss  
*Ådergnejsomvandlad*
- Migmatized  
*Migmatitisk*
- Pillow structure  
*Kuddlavestruktur*
- Fragment, unspecified  
*Inneslutning, ospecificerad*

# 2017/18 Copper-Nickel Mineralized Gabbro Discovery

- Underlies Rodingtrask VMS mineralization
- 2017: Hit variably mineralized gabbro (>200-metre core length)
- In 2018 a second hole cut magmatic sulphides assaying 0.38% CuEq over a core length of 14.4m
- Host rock is gabbro including vari-and orbicular textures which are documented textural styles closely associated with potential massive sulphide accumulations
- \*\* Tenors for individual samples ranged from 0.79 to 14.14% Cu and 0.54 to 2.06% Ni in 100% sulphide



KN18-06 Cu-rich core



KN18-06 Drill Core "orb-texture"

\*\* Tenors in above are calculated to 100% sulphide; a common practice in nickel-copper exploration to determine economic possibilities of a potentially discovered massive sulphide deposit on the property.

See NRs dated October 23, 2017 and October 4, 2018